

INSTALLATION INSTRUCTIONS

DESCRIPTION: Engine Guard Kit
PART # B90-F11D0-V0
MODEL: '16~ XSR900



⚠ WARNING

Please read and understand these instructions completely before installation to avoid possible injury to yourself, or damage to the accessory or vehicle.

NOTICE:

This installation requires a torque wrench and should be performed by an authorized Yamaha dealer or other qualified technician.

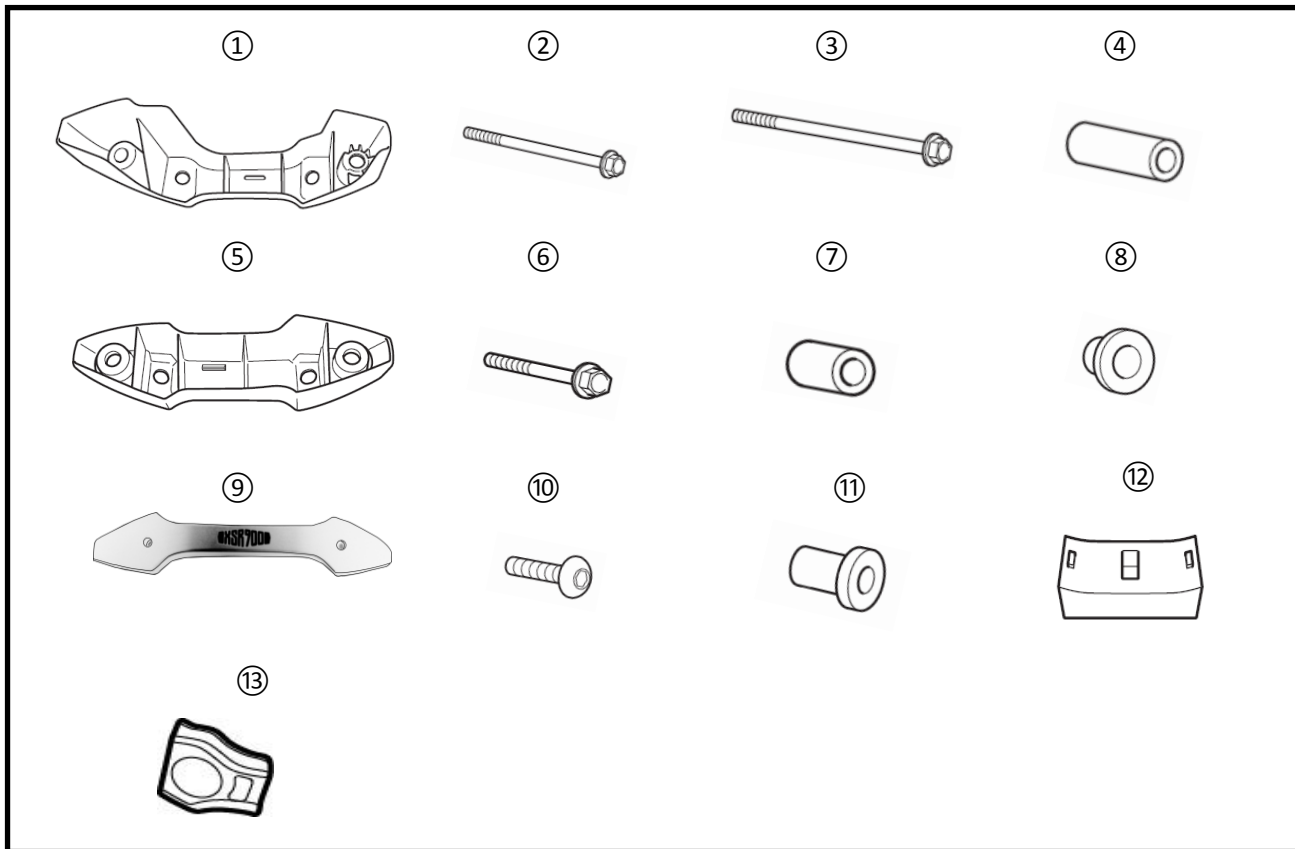
WARRANTY INFORMATION:

Genuine Yamaha accessories are covered by a one-year limited warranty against defects in material or workmanship. Labor for replacement of defective components is not covered. See your Yamaha dealer for a copy of the warranty statement.

DEALER OR INSTALLER:

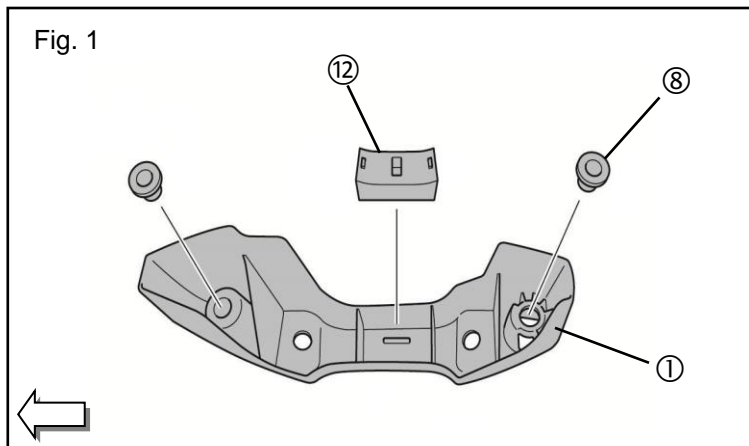
Please give a copy of these instructions to your customer as they contain important information for future reference.

PARTS LIST:



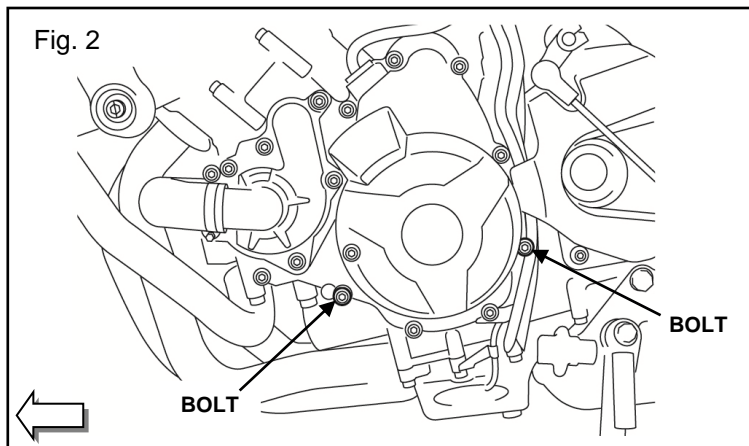
No.	Part Number	Description	Qty
--	B90-F11D0-V0	Engine Guard Kit	--
①	*	Left Cover	1
②	*	Left Flange Bolt M6 x 65mm	1
③	*	Left Flange Bolt M6 x 80mm	1
④	*	Left Collar 30mm Length	2
⑤	*	Right Cover	1
⑥	*	Flange Bolt M6 x 40mm	2
⑦	*	Right Collar 13mm Length	2
⑧	*	Collared Washer M6	4
⑨	*	Plate	2
⑩	*	Button Head Bolt M5 x 14mm	4
⑪	*	Well Nut M6	4
⑫	*	Bracket	2
⑬	*	Rubber Bumper	1

* Part supplied with kit only and not available separately.



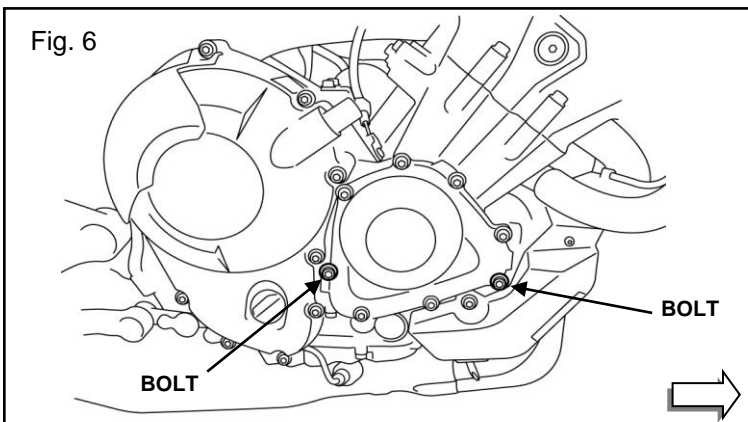
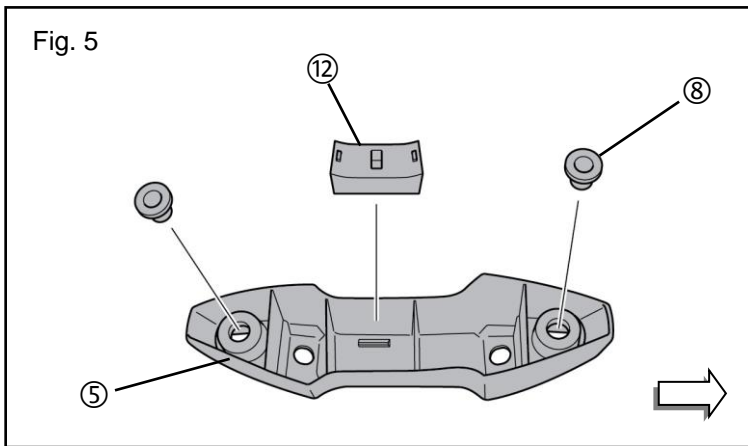
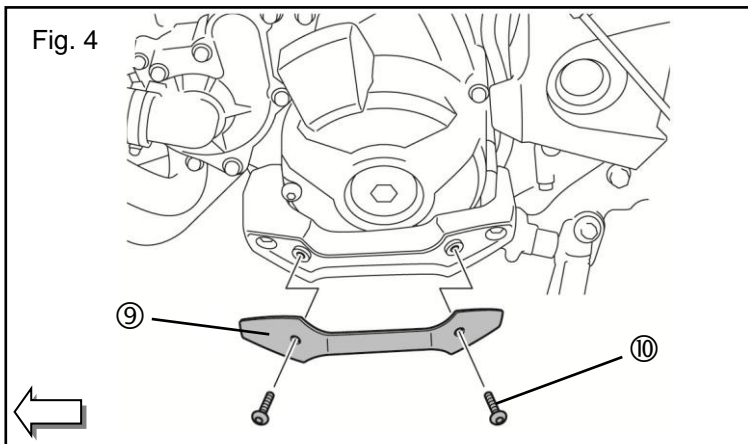
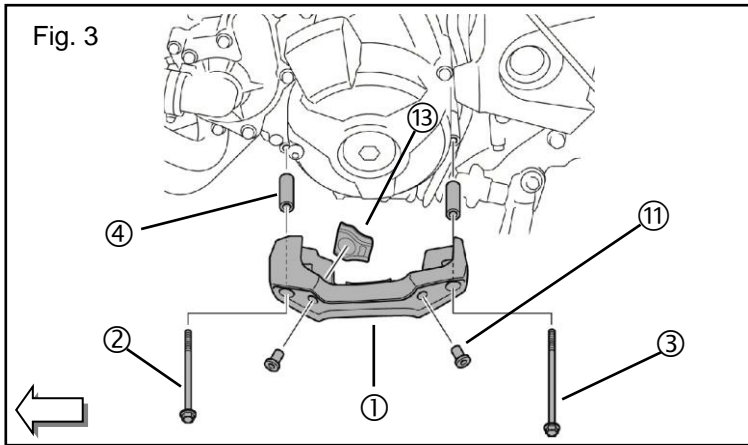
PREPARATION:

1. Stand the motorcycle on a secure and level surface.
2. Clean all mounting surfaces before beginning installation.
3. The parts in the kit come packaged partially assembled. Open the package and remove the M5 screws (⑩), the plates (⑨), and the well nuts from the left (①) and right (⑤) covers. Retain these parts for reuse.

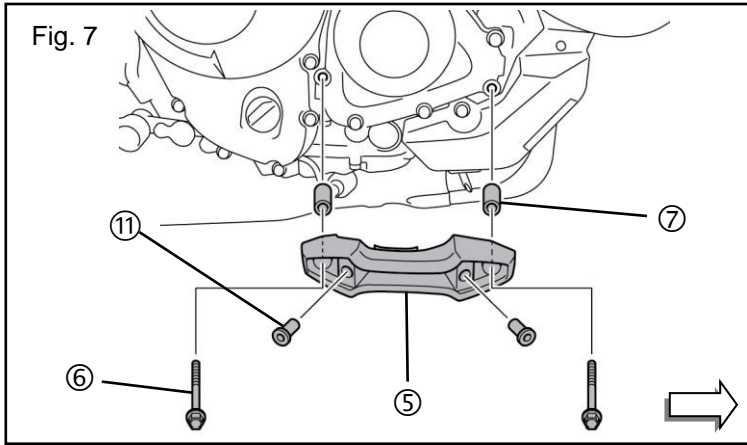


INSTALLATION:

1. Starting on the left side, locate and insert bracket (⑫), and collared washers (⑧) to left cover (①). Seat the indentation on the bracket (⑫) onto the ridge as shown in Fig. 1.
2. Remove the two bolts shown in Fig. 2. These bolts are not reused.



1. Install rubber bumper (13) into cover (1) as shown in Fig. 3.
2. Install cover (1) to engine case using the two long collars (4), flange bolt (2), and longer flange bolt (3) as shown in Fig. 3.
3. Torque flange bolts to 10 Nm (1.0 m-kgf, 7.2 ft-lbf).
4. Install well nuts (11) into cover (1) as shown in Fig. 3.
5. Install plate (9) onto cover using button head bolts (10) as shown in Fig. 4.
6. Torque button head bolts to 0.5 Nm (0.05 m-kgf, 4.4 in-lbf).
7. Continuing on the right side, locate and insert bracket (12), and collared washers (8) to right cover (5). Seat the indentation on the bracket (12) onto the ridge as shown in Fig. 5.
8. Remove the two bolts shown in Fig. 6. These bolts are not reused.



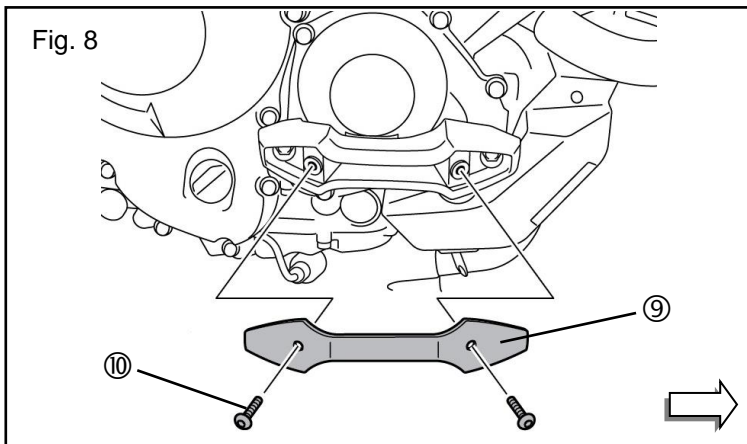
10. Install cover (5) to engine case using flange bolts (6) and two short collars (7) as shown in Fig. 7.

11. Torque flange bolts to 10 Nm (1.0 m-kgf, 7.2 ft-lbf).

12. Install well nuts (11) into cover (5) as shown in Fig. 7

13. Install plate (9) onto cover using button head bolts (10) as shown in Fig. 8.

14. Torque button head bolts to 0.5 Nm (0.05 m-kg, 4.4 in-lb).



MAINTENANCE:

Periodically check all hardware for tightness and re-torque as necessary.

CARE AND CLEANING:

Wash using a mild soap and water solution and soft cloth. Protect with Yamaha Spray Polish (p/n # ACC-SPRAY-PL-SH).

CUSTOMER SERVICE:

For further information see your Yamaha dealer.

ESTIMATED TIME TO INSTALL: 0.3HRS